

Installation instructions CRD-System Mercedes 2.0 CDI 140bhp

III.1 Mounting position rail pressure sensor



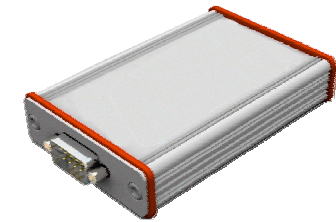
III.2 Close up rail pressure sensor



Installation Mercedes B-Class CDI

use with: wiring loom **CDI1**

- Switch the Ignition off.
- Localise diesel pressure sensor/pressure transducer sensor on the common rail. See picture.
- Pull out the three-pole plug.
- Connect the cable of the CRD System to the original plug of the common rail.
- If possible, lay the cable protected from splash water.
- Now plug the module onto the Sub-D Connection.
- The system is preset; normally you will not need to readjust the module.
- If you want to increase or reduce the power performance, you will only need to turn the potentiometer to the left (increased efficiency) or to the right (reduced power performance). Only CR modules.
- For additional Supererogation settings on the CRD-Module the jumperposition in the module has to be changed. Further explanations are available in the: [Instructions Manual CRD System](#)
- Now fit the engine cover back on. The vehicle is now ready for a test drive.
- If you remove the module, you have to plug the peg onto the cable harness or remove the whole tuning system and restore the original settings, otherwise the vehicle will not function properly.



04.12.2005

Pressure Transducer Sensor T-cable cable connection engine

